



Hisense | **INVERTER
EXPERT**

T3 INVERTER LCAC

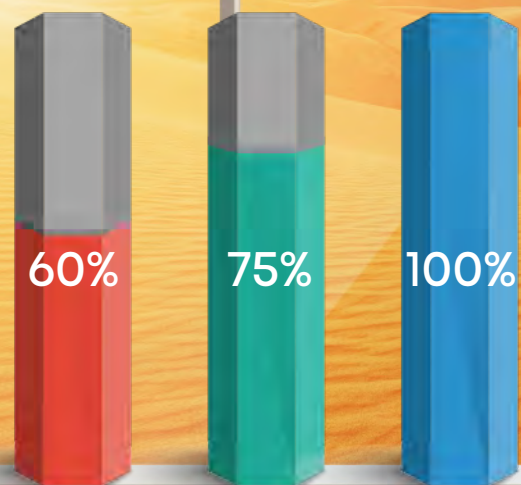
Three Types of Terminals to Choose From

There are three types of terminal options for Restaurant, Hotel, Apartment, Shopping Mall, etc.



Full Capacity

At an ambient temperature of
54°C : Full capacity as Rated!



ON/OFF

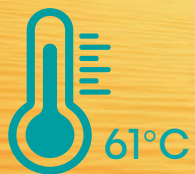
Inverter

Hisense
Inverter

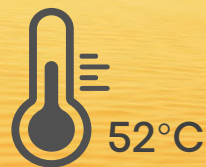


61°C Operation

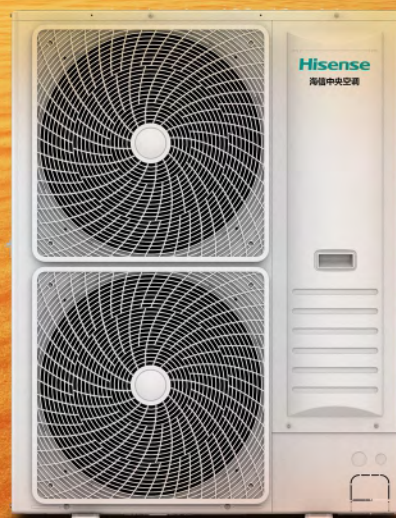
At 61°C, Hisense T3 inverter LCAC still gives you instant cooling.



Hisense

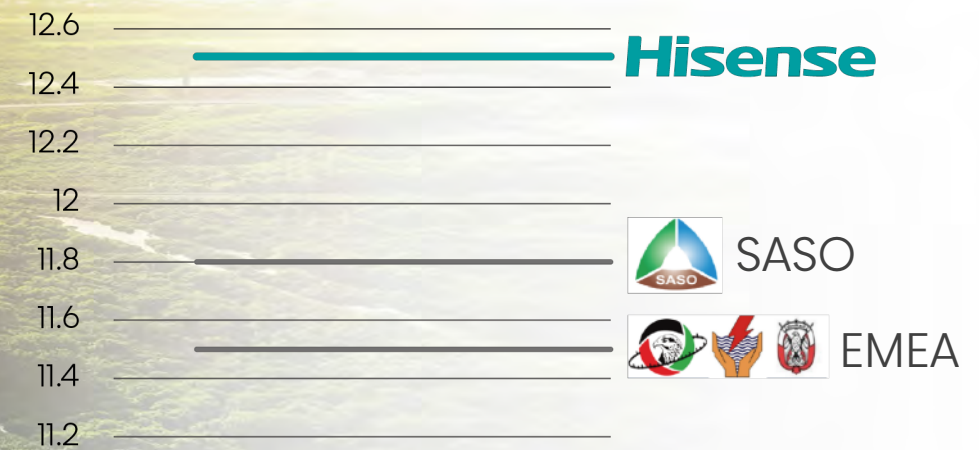


Midea/Haier



High EER

EER of Hisense T3 inverter is higher than the requirements of Energy Efficiency Standards, including ESMA/MEW/ESTIDAMA/SASO



360° Full DC Inverter



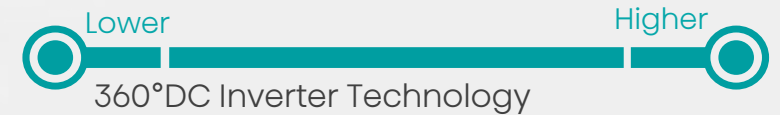
Low frequency torque compensation technology

- Constant temperature
- Energy-saving



High frequency weak magnetic control technology

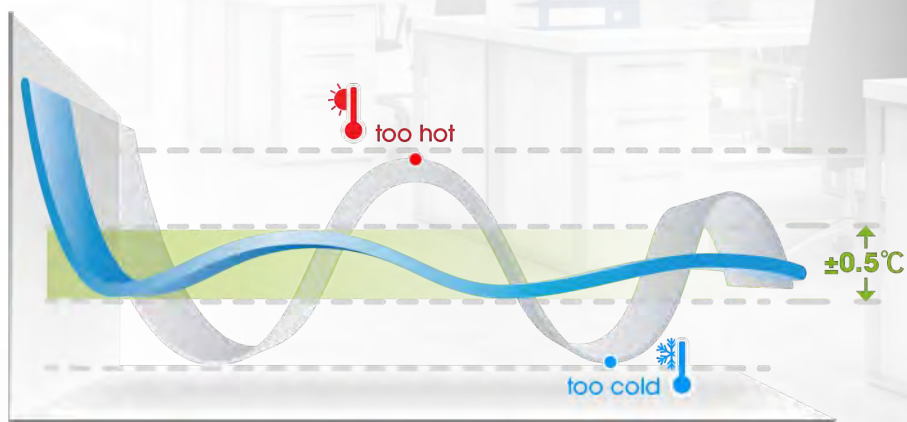
- Cooling stronger
- Heating stronger



180° Sine Wave Control Technology



- More efficient
- Precise temperature control within 0.5°C
- Extending usage time



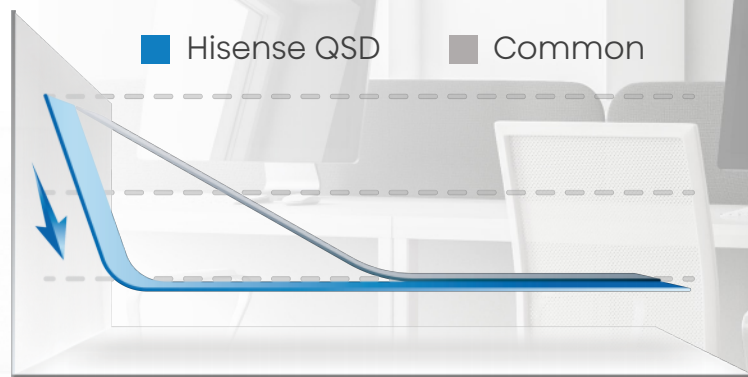
■ Inverter Air Conditioner

■ Temperature Setting

■ Normal Conditioner

QSD-Fast Cooling

- **No.1** CLOSED-LOOP BLDC
- Startup in industry
Updating algorithm



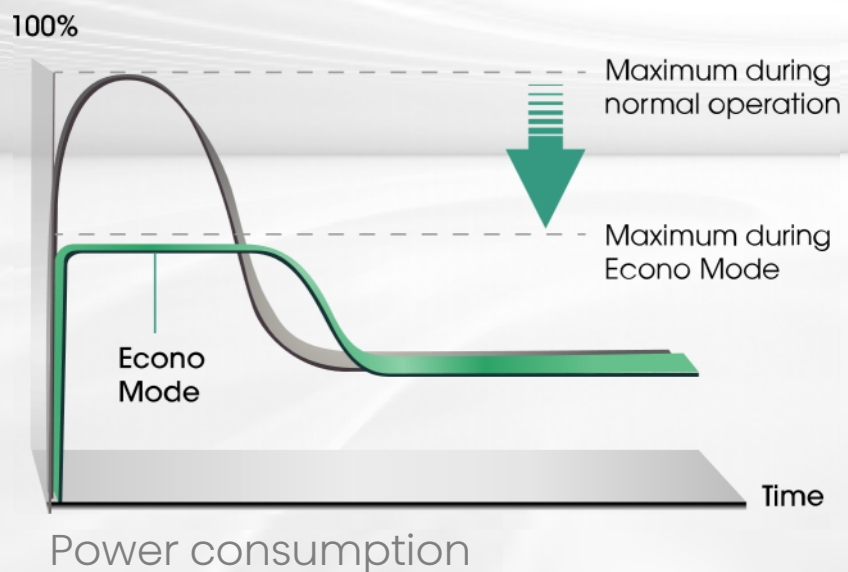
30% decrease in frequency-increasing time.

50% increase in cooling capacity.



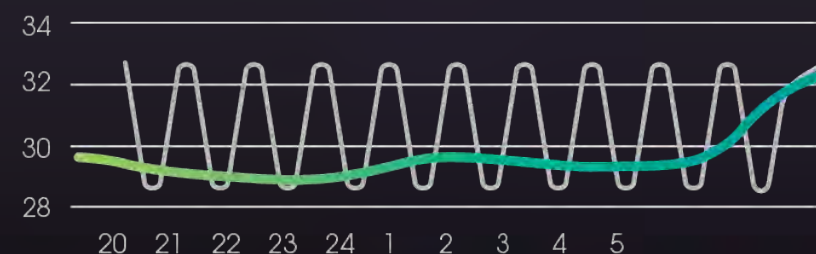
Saving Energy

When turned on,
Hisense Dual-mode inverter AC saves
power consumption by **20%**, compared to
ordinary inverter AC.



More Silent

- ON/OFF ACs, being on and off frequently, resulting in loud and unstable noise.
- Inverter ACs, with low-frequency operation, creates a quiet sleeping environment.



Long Piping & Large Height Difference

With high installation flexibility, the ACs can be installed in sites with piping of up to **50m** and height difference of up to **30m**.

Piping		18K	24K	30K	36K	42K	48K	60K
Diameter(Liquid)	<i>Inch</i>	1/4	3/8	3/8	3/8	3/8	3/8	3/8
Diameter(Gas)	<i>Inch</i>	1/2	5/8	5/8	3/4	3/4	3/4	7/8
Max. Length	<i>m</i>	30	30	40	40	50	50	50
Max. Height	<i>m</i>	20	20	30	30	30	30	30

Convenient Installation

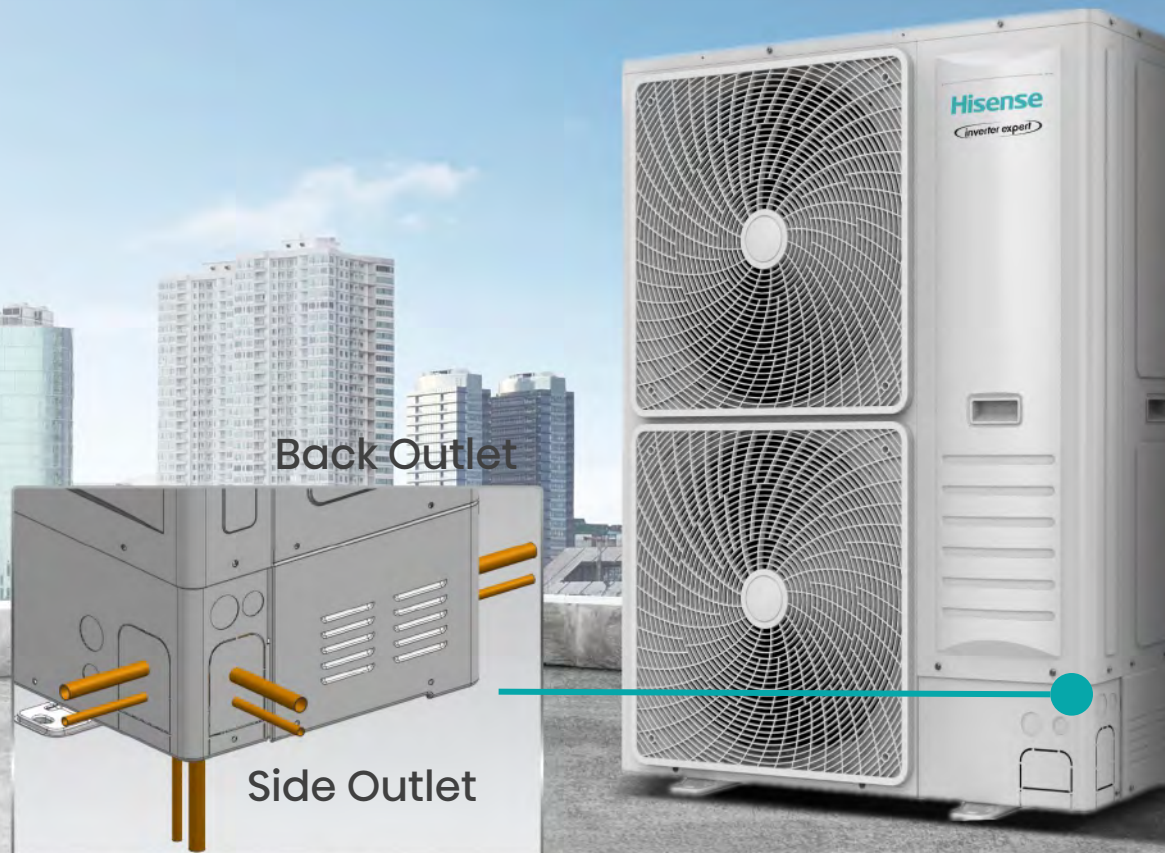
Four access can be selected for pipe connecting($\geq 36K$)

Front Outlet

Back Outlet

Side Outlet

Bottom Outlet

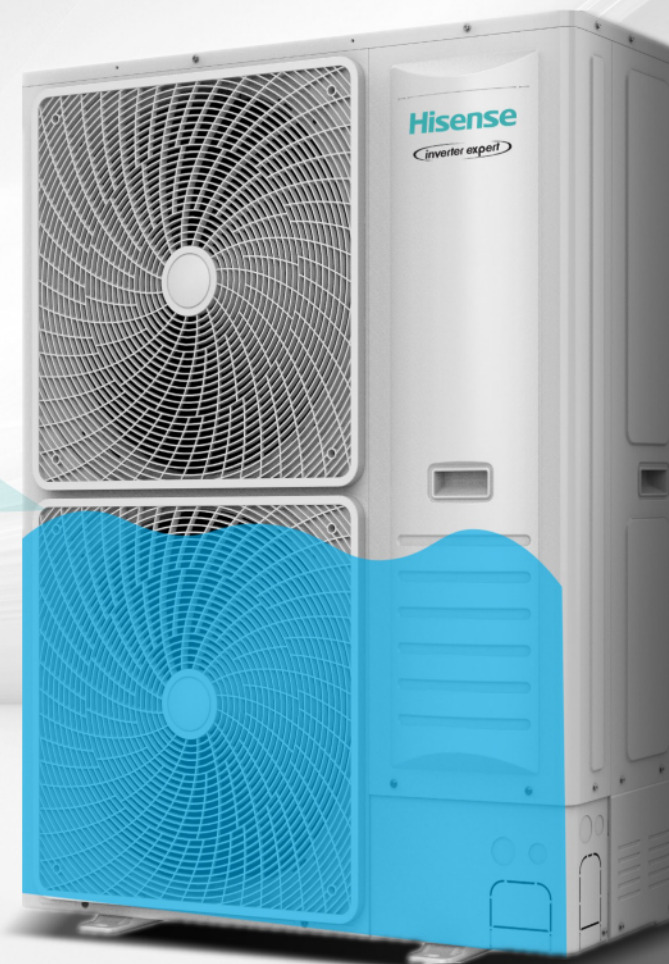


Refrigerant Leakage Alarm

The control system will send a fault alarm and stop running ,when the refrigerant leakage ratio reaches a certain value



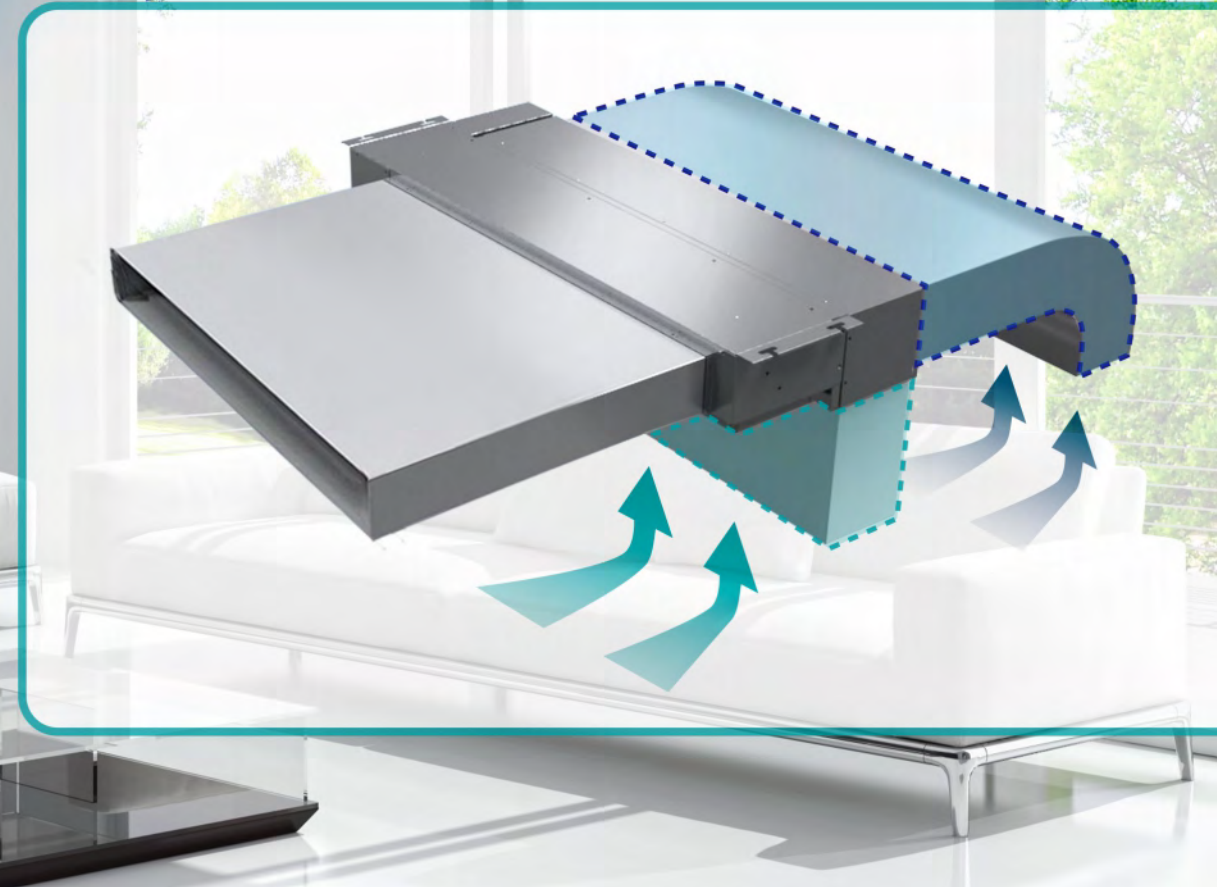
Ensure safe operation of
the air conditioning



Flexible Installation

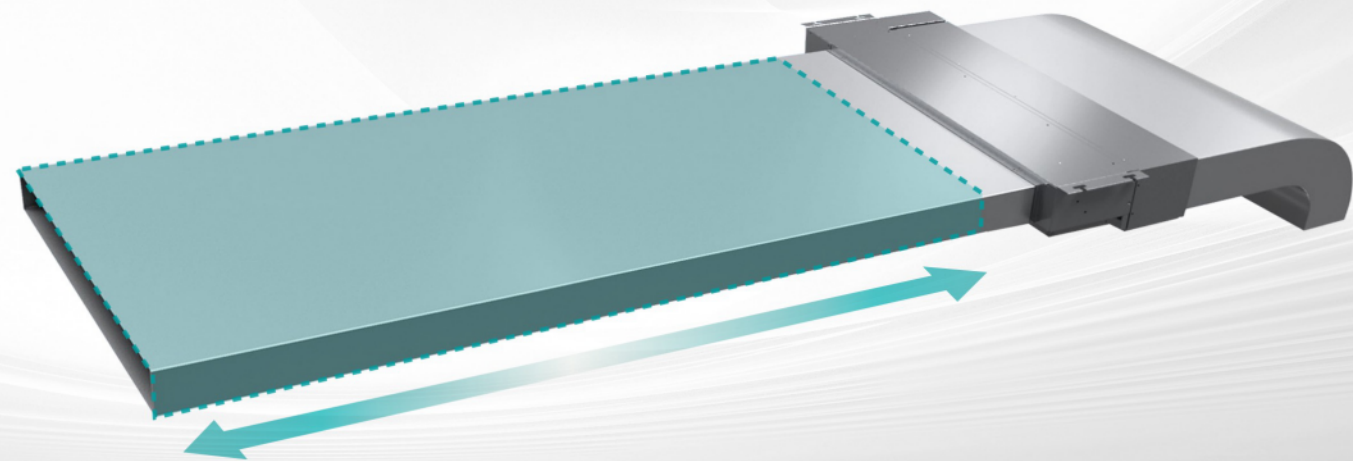
Air suction direction can be altered from rear to bottom, giving a choice between free use and connection to optional suction grilles.

Note: The noise value of rear suction is 5dB lower than that of the bottom suction, so rear suction is recommended.



Optional Static Pressure

Optional wide static pressure range for long ducting and multizone applications, more flexible and convenient in installation.

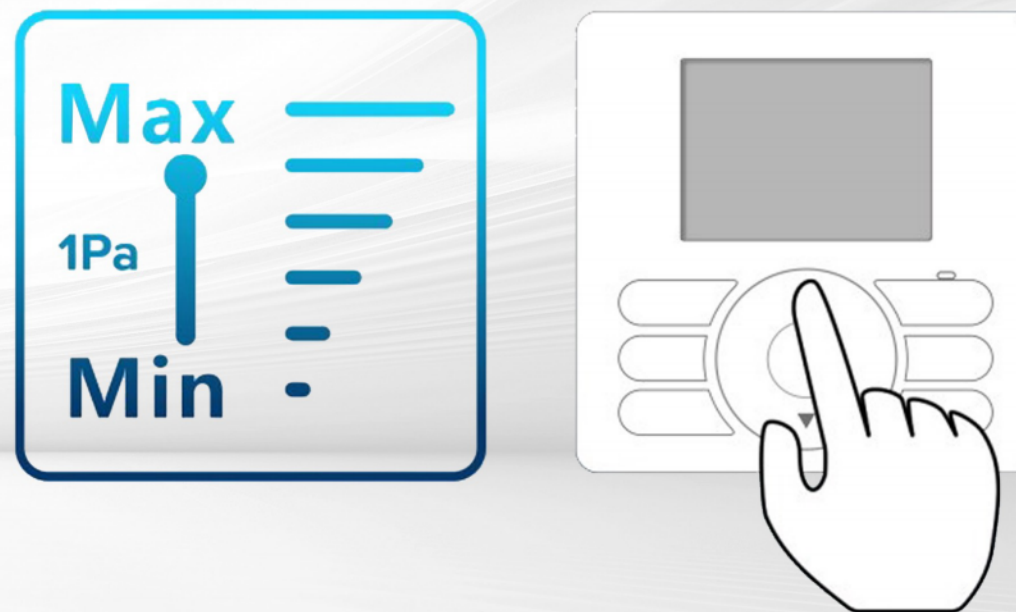


		18K	24K	30K	36K	48K	60K
ESP	Rated	35	35	47	47	60	60
	Range	0-80	0-120	0-120	0-120	0-120	0-150

1 Pa ESP Setting

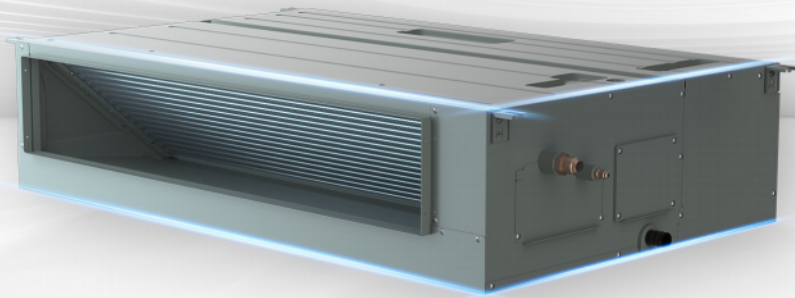
Possibility to change ESP via wired remote controller allows optimization of the supply air volume.

And the adjustment precision of 1Pa can give the most accurate ESP setting in class.

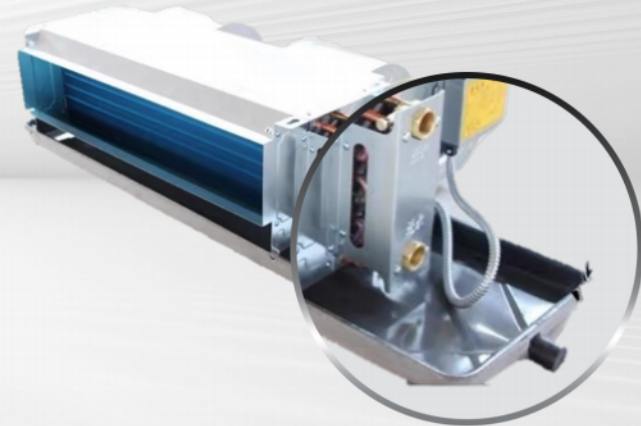
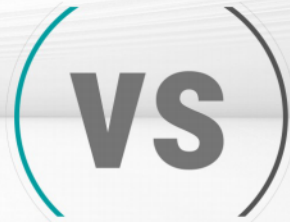


Built in Drain Pan

Compared with outside drain pan design, the new built-in design can reduce the dust, bacterium adhesion, and avoid water leakage.



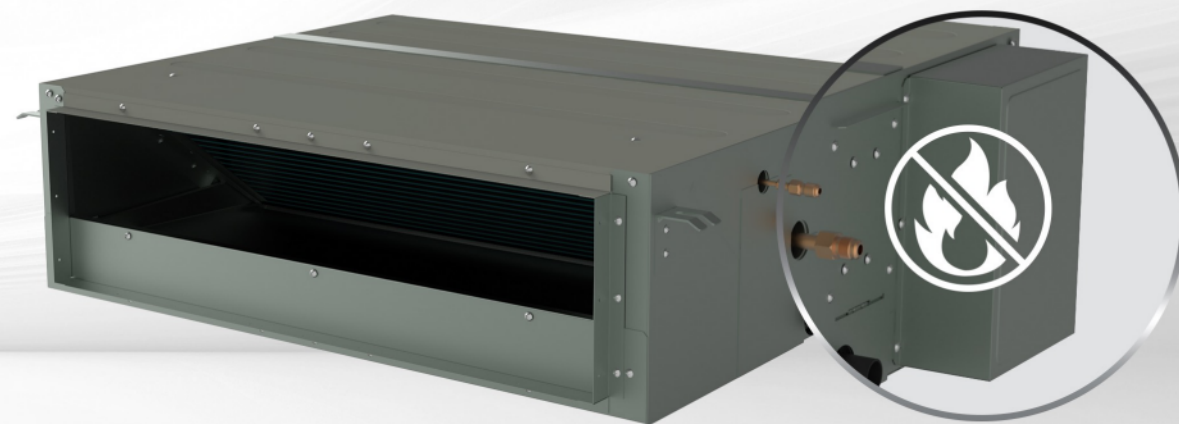
Built-in Drain Pan



Outside Drain Pan

Safety Protection

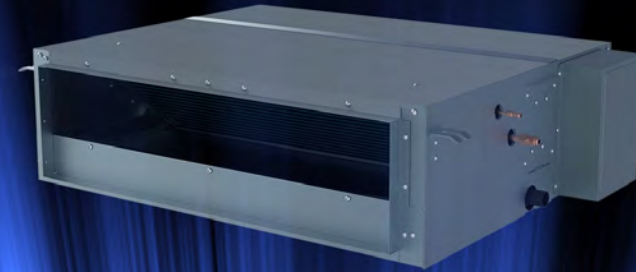
Metal control box--anti-fire design for PCB





Auto Restart

Should there be temporary loss of power, the unit will automatically restart itself in the same operating mode, once the power is restored.



Model			AUD-18UTX2SJLL	AUD-24UTX2SKDH	AUD-36UTX2SNHH	AUD-48UTX2SHPH	AUD-60UTX2SHPH
Indoor model			AUD-18UX2SLL	AUD-24UX2SDH	AUD-36UX2SHH	AUD-48UX2SPH	AUD-60UX2SPH
Outdoor model			AUW-18UT2SJ	AUW-24UT2SK	AUW-36UT2SN	AUW-48UT2SH	AUW-60UT2SH
Power supply			V-ph-Hz	220~240-1-50/60	220~240-1-50/60	220~240-1-50/60	220~240-1-50/60
Power factor				0.98	0.98	0.98	
Max. input consumption				2700	4230	3850	
Max. input current				14	18	17.5	
Cooling (indoor temperature 27/19 outdoor temperature 35/24)	Capacity	T1	Btu/h	18000	24600	36800	48000
	Capacity	T1	W	5275	7210	10785	14068
	Input	T1	W	1457	1900	2992	4000
	Current	T1	A	6.4	8.5	13.9	6.6
	EER	T1	W/W	3.62	3.75	3.60	3.52
	EER	T1	btu/h/w	12.35	12.80	12.30	12.00
Cooling(indoor temperature 29/19 outdoor temperature 46/29)	Capacity	T3	Btu/h	16600	21600	30400	44000
	Capacity	T3	W	4865	6331	8910	12896
	Input	T3	W	1804	2330	3380	5000
	Current	T3	A	8.37	10.81	15.68	8.20
	EER	T3	W/W	2.70	2.72	2.52	2.58
	EER	T3	btu/h/w	9.20	9.27	8.60	8.80
Indoor air flow Rated(Hi/Med/Lo)			m ³ /h	1300/1000/800	1850/1400/800	2100/1800/1500	3300/2800/2300
Indoor air flow Rated(Hi/Med/Lo)			CFM	765/588/470	1088/823/407	1235/1059/882	1941/1647/1353
ESP	Rated	Pa		35.00	35	37+10	50+10
	Range	Pa		0~80	0~80	0~150	0~150
Indoor noise level (Hi/Med/Lo)			dB(A)	41/39/35	42/39/36	45/42/39	50/47/44
Dimension (WxHxD)			mm	900x270x720	1140x720x268	1300x350x800	1400x858x420
Indoor unit	Packing(LxWxH)	mm		1170x870x340	1330x870x360	1550x410x940	1650x1010x505
	Net/Gross weight	kg		30/35	34/41	51.0/60.0	83/99
Design pressure			MPa	4.8/1.5	4.8/1.5	4.8/1.5	4.8/1.5
Drainage water pipe diameter			mm	De32	De32	ODΦ32	ODΦ32
Refrigerant	Liquid side/ Gas side	mm		Φ6.35/Φ12.7(1/4"/1/2")	Φ9.52/Φ15.88(3/8"/5/8")	Φ9.52/Φ	Φ9.52/Φ19.05(3/8"/3/4')
Controller				Wired control	Wired control	Wired control	Wired control
Operation temperature			℃	16~30	16~30	16~30	16~30
Room temperature	Cooling	℃		16~30	16~30	16~30	16~30
	Heating	℃		16~30	16~30	16~30	16~30
Compressor	Model			ATD150RDP A8JTA	ATF235D43TMT	ATF310D46TMT	ATQ420D1SN5A1
	Type			ROTARY	ROTARY	ROTARY	ROTARY
	Brand			Highly	GMCC	GMCC	GMCC
	Capacity	Btu/h		5940	24360	9180	12930
	Input	W		1360	1940	2585	3455
	Rated current(RLA)	A		4.5	8.9	5.12	7.10
	Refrigerant oil	ml		A 68HES-H 480mL	RB75EA-670ml	VG 75 (1000cc)	POE VG75(1500cc)
Outdoor noise level (sound pressure)			dB(A)	56	59	57	60
Throttle type				EEV	EEV	EEV+throttle valve	EEV+throttle valve
Outdoor unit	Dimension(WxHxD)	mm		860x670x310	930x760x400	900x1170x320	950x1460x330
	Packing(LxWxH)	mm		990x450x730	1060x450x820	970x1300x430	1040x1600x430
	Net/Gross weight	kg		43/47	56/60		
Refrigerant type/c	Type			R410A	R410A	R410A	R410A
	Charged volume	kg		1.5	2.2	3.0	4.2
Design pressure			MPa	4.8/1.5	4.8/1.5	4.8/1.5	4.8/1.5
Refrigerant piping	Liquid side/ Gas side	mm(inch)		Φ6.35/Φ12.7(1/4"/1/2")	Φ9.52/Φ15.88(3/8"/5/8")	Φ9.52/Φ19.05(3/8"/3/4")	Φ9.52/Φ19.05(3/8"/3/4')
	Max. pipe length	m		30	30	50	50
	Max. difference in level	m		15	15	30	30
Ambient tempera	Cooling	℃		15-54	15-54	15-54	15-54
	Heating	℃		-10-24	-10-24	-10-24	-10-24

Hisense

R-410A



Ideal Wind with Round Flow



360° Round Flow
Uniform temperature
distribution



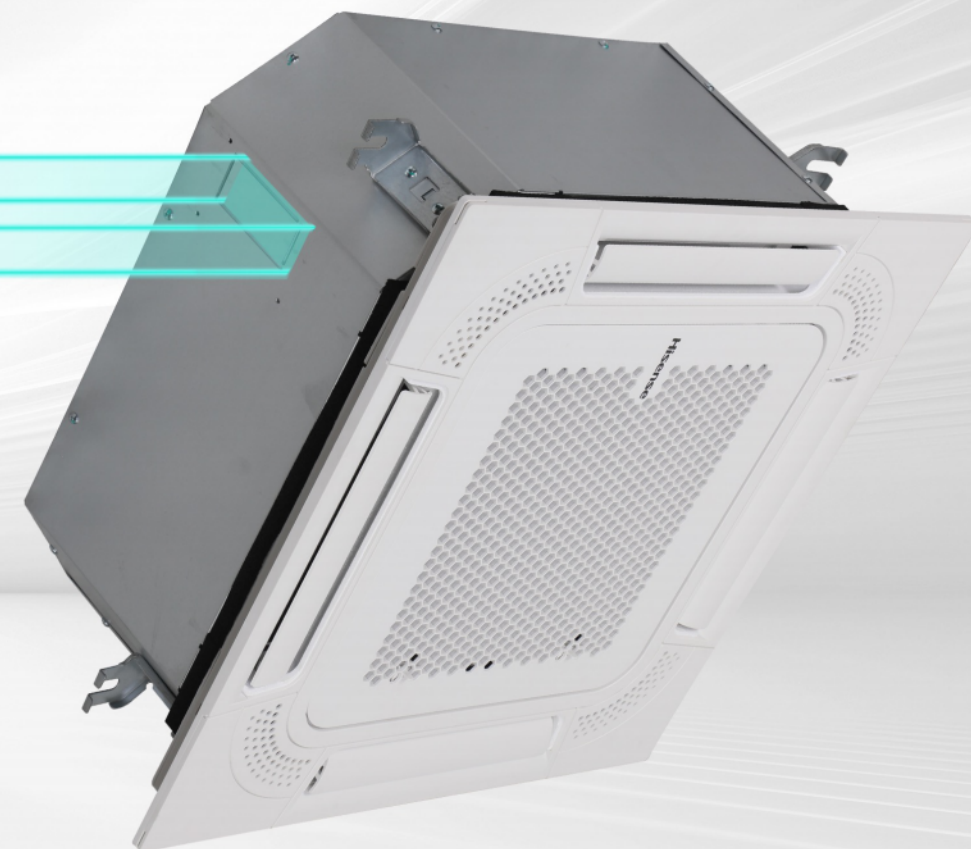
BIG LOUVER
With 88° free
swinging angle



IDEAL WIND
Reaches
every corner

Fresh Air Intake

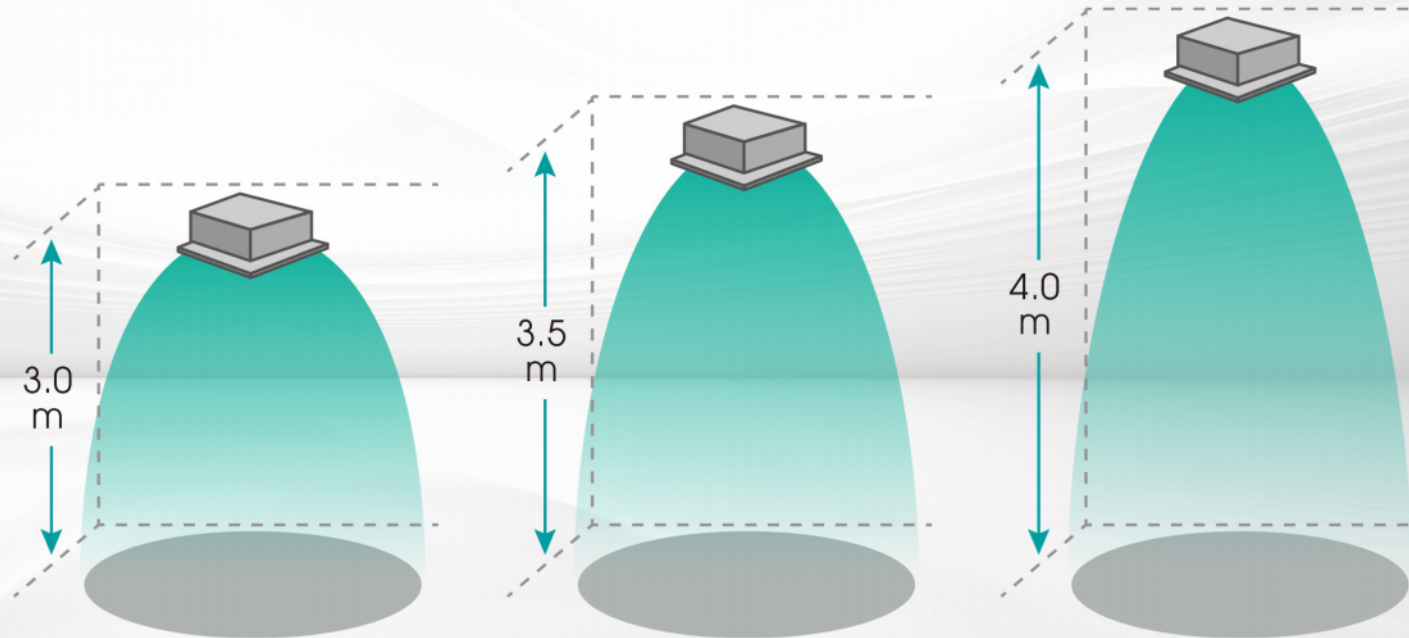
Fresh air intake will introduce the outdoor fresh air into the room to improve indoor air quality.



Note: The proportion of fresh air volume cannot exceed 20% of the total design air volume.

High Ceiling

When the ceiling is high, the unit parameters can be set through the wired controller to compensate the installation height, so that the cool air can blow down to people's activity area.



Model		AUC-18UR2SJA		AUC-24UR2SKJA		AUC-36UR2SNKA		AUC-48UR2SHKA	
Indoor model		AUC-18UR2SJA		AUC-24UR2SJA		AUC-36UR2SKA		AUC-48UR2SKA	
Outdoor model		AUW-18UT2SJ		AUW-24UT2SK		AUW-36UT2SN		AUW-48UT2SH	
Power supply		V-ph-Hz	220 ~240-1-50/60	220 ~230-1-60	220 ~230-1-60	220 ~240-1-50/60	220 ~240-1-50/60	220 ~240-1-50/60	220 ~240-1-50/60
Power factor			0.98	0.98	0.98	0.98	0.98	0.98	0.98
Max. input consumption		W	2700	4230	4230	3850	3850	5600	5600
Max. input current		A	14.0	18	18	17.5	17.5	25.5	25.5
Cooling (indoor temperature 27/19 outdoor temperature 35/24)	Capacity T1	Btu/h	18500	24000	24000	35000	35000	48000	48000
	Capacity T1	W	5422	7020	7020	10258	10258	14068	14068
	Input T1	W	1450	1905	1905	2917	2917	4000	4000
	Current T1	A	6.4	8.5	8.5	13.5	13.5	6.6	6.6
	EER T1	W/W	3.69	3.69	3.69	3.52	3.52	3.52	3.52
	EER T1	btu/h/w	12.6	12.6	12.6	12.00	12.00	12.00	12.00
Cooling (indoor temperature 29/19 outdoor temperature 46/29)	Capacity T3	Btu/h	17000	21600	21600	29000	29000	44000	44000
	Capacity T3	W	4982	6331	6331	8499	8499	12896	12896
	Input T3	W	1809	2330	2330	3372	3372	5000	5000
	Current T3	A	8.02	10.4	10.4	15.64	15.64	8.20	8.20
	EER T3	W/W	2.75	2.75	2.75	2.52	2.52	2.58	2.58
	EER T3	btu/h/w	9.40	9.40	9.40	8.60	8.60	8.80	8.80
Indoor air flow Rated(Hi/Med/Lo)		m ³ /h	1100/950/800	1400/1300/1150	1400/1300/1150	2000/1750/1550	2000/1750/1550	2000/1750/1550	2000/1750/1550
Indoor air flow Rated(Hi/Med/Lo)		CFM	647/559/470	824/765/677	824/765/677	1970/1735/1520	1970/1735/1520	1970/1735/1520	1970/1735/1520
Indoor noise level (Hi/Med/Lo)		dB(A)	42/40/38	47/45/43	47/45/43	pending	pending	pending	pending
Indoor unit	Dimension (WxHxD)	mm	840x236x840	840x236x840	840x236x840	840x272x840	840x272x840	840x272x840	840x272x840
	Packing(LxWxH)	mm	996x956x370	996x956x370	996x956x370	950x950x360	950x950x360	950x950x360	950x950x360
	Net/Gross weight	kg	22/27	22/27	22/27	30/36	30/36	30/36	30/36
Design pressure		MPa	4.8/1.5	4.8/1.5	4.8/1.5	4.8/1.5	4.8/1.5	4.8/1.5	4.8/1.5
Drainage water pipe diameter		mm	De25	De25	De25	32	32	32	32
Refrigerant piping Liquid side/ Gas side		mm	Φ6.35/Φ12.7(1/4"/1/2")	Φ9.52/Φ15.88(3/8"/5/8")	Φ9.52/Φ15.88(3/8"/5/8")	Φ9.52/Φ19.05(3/8"/3/4')	Φ9.52/Φ19.05(3/8"/3/4')	Φ9.52/Φ19.05(3/8"/3/4')	Φ9.52/Φ19.05(3/8"/3/4')
Controller			Remote control	Wired control	Wired control	Wireless	Wireless	Wired control	Wired control
Operation temperature		℃	16 ~30	16~30	16~30	16~30	16~30	16~30	16~30
Room temperature	Cooling	℃	16 ~30	16~30	16~30	16~30	16~30	16~30	16~30
	Heating	℃	16 ~30	16~30	16~30	16~30	16~30	16~30	16~30
Compressor	Model		ATD150RDPA8JTA	ATF235D43TMT	ATF235D43TMT	ATF310D46TMT	ATF310D46TMT	ATQ420D1SN5A1	ATQ420D1SN5A1
	Type		ROTARY	ROTARY	ROTARY	ROTARY	ROTARY	ROTARY	ROTARY
	Brand		Highly	GMCC	GMCC	GMCC	GMCC	GMCC	GMCC
	Capacity	Btu/h	5940	24360	24360	9180	9180	12930	12930
	Input	W	1360	1940	1940	2585	2585	3455	3455
	Rated current(RLA)	A	4.5	8.9	8.9	5.12	5.12	7.10	7.10
	Refrigerant oil	ml	A68HES-H 480mL	RB75EA-670ml	RB75EA-670ml	VG 75 (1000cc)	VG 75 (1000cc)	POE VG75(1500cc)	POE VG75(1500cc)
	Refrigerant oil	ml	A68HES-H 480mL	RB75EA-670ml	RB75EA-670ml	VG 75 (1000cc)	VG 75 (1000cc)	POE VG75(1500cc)	POE VG75(1500cc)
Outdoor noise level (sound pressure)		dB(A)	56	59	59	57	57	60	60
Throttle type			EEV	EEV	EEV	EEV+throttle valve	EEV+throttle valve	EEV+throttle valve	EEV+throttle valve
Outdoor unit	Dimension(WxDxH)	mm	860x670x310	930x760x400	930x760x400	900x1170x320	900x1170x320	950x1460x330	950x1460x330
	Packing(LxWxH)	mm	990x450x730	1060x450x820	1060x450x820	970x1300x430	970x1300x430	1040x1600x430	1040x1600x430
	Net/Gross weight	kg	43/47	56/60	56/60	pending	pending	pending	pending
Refrigerant type/Q	Type		R410A	R410A	R410A	R410A	R410A	R410A	R410A
	Charged volume	kg	1.5	2.2	2.2	3.0	3.0	4.2	4.2
Design pressure		MPa	4.8/1.5	4.8/1.5	4.8/1.5	4.8/1.5	4.8/1.5	4.8/1.5	4.8/1.5
Refrigerant piping	Liquid side/ Gas side	mm(inch)	Φ6.35/Φ12.7(1/4"/1/2")	Φ9.52/Φ15.88(3/8"/5/8")	Φ9.52/Φ15.88(3/8"/5/8")	Φ9.52/Φ19.05(3/8"/3/4')	Φ9.52/Φ19.05(3/8"/3/4')	Φ9.52/Φ19.05(3/8"/3/4')	Φ9.52/Φ19.05(3/8"/3/4')
	Max. pipe length	m	30	30	30	50	50	50	50
	Max. difference in level	m	15	15	15	30	30	30	30
Ambient temperature	Cooling	℃	15-54	15-54	15-54	15-54	15-54	15-54	15-54
	Heating	℃	-10-24	-10-24	-10-24	-10-24	-10-24	-10-24	-10-24

Hisense

R-410A



18m Long Distance Airflow

To meet the needs of large space,
such as living room and meeting room



4D Air Flow

The air louvers which can swing vertically and horizontally helps to circulate air to every corner of the room.

Right and left



Up and down

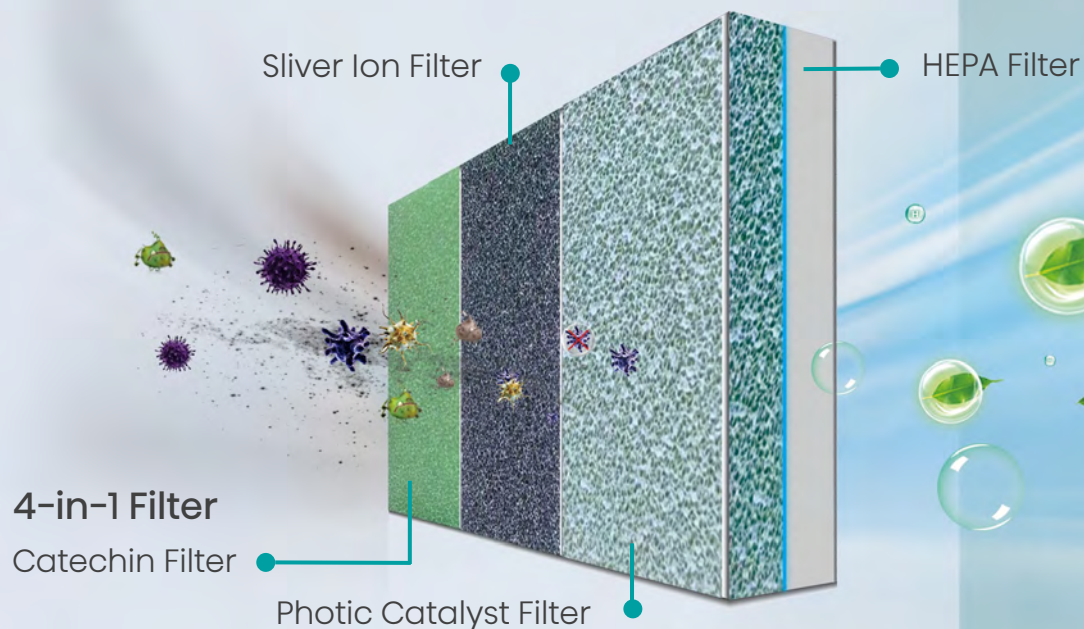


Easy Clean Filter

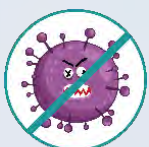
The filter can be removed and cleaned easily.



Optional Healthy Filter



Pollen



Molds



Bacteria



Viruses



Pet flavor



Cooking taste



Cigarette smell



Catechin Filter

Restraining Staphylococcus and Escherichia $\geq 99\%$



Photocatalyst Filter

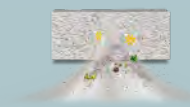
Photocatalyst filter, eliminate pyrococcus, bacteria and odor.

1. Restraining Staphylococcus (ATCC6538) $\geq 99\%$
2. Restraining coliform $\geq 96\%$



Silver Ion Filter




Effectively restraining staphylococcus and coliform



HEPA Filter

HEPA filter, efficient removal of pollen, pulverize dust pulmonary bacillus particle clearance $0.3\mu\text{m} > 99.7\%$

Wired Controller

Model	A Series		C Series	
				
Function	YXE-A03U(E)	YXE-C02U1(E)	YXE-C02U1(E)	
Wireless remote receiver	YES	YES	NO	
Adjust static pressure	NO	YES	YES	
Temperature compensation	NO	YES	YES	
ON/OFF	YES	YES	YES	
Weekly timer	NO	YES	YES	
Central control	NO	NO	YES	

Wired Controller & Remote Controller

Wired controller is used as a signal receiver. The indoor unit can be controlled by the remote controller independently.



8M
YXE-A03U(E)



8M
YXE-C01U1(E)





Signal Receiver

A wired controller is used as a signal receiver. However, you can use a wireless remote controller to control the unit when it is installed too high or too far.

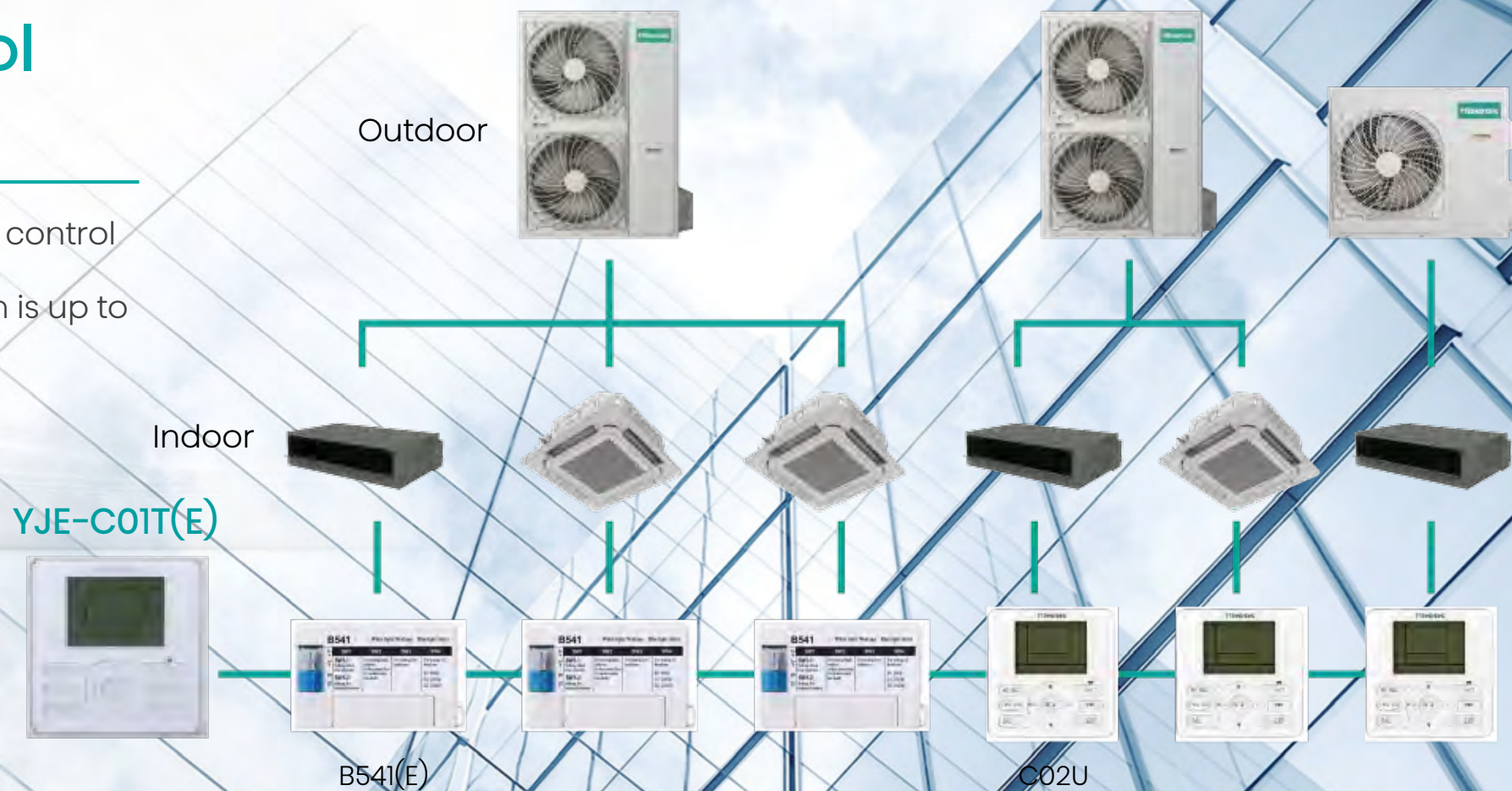


Wireless Remote Controller

Model	J1-06	L1-12
Function		
Set Temperature	16-30C°	16-30C°
Electric Heating	NO	NO
I Feel	YES	YES
Smart	YES	YES
Mute	NO	NO
Super	YES	YES
Time/sleep/dimmer/time on/time off	YES	YES

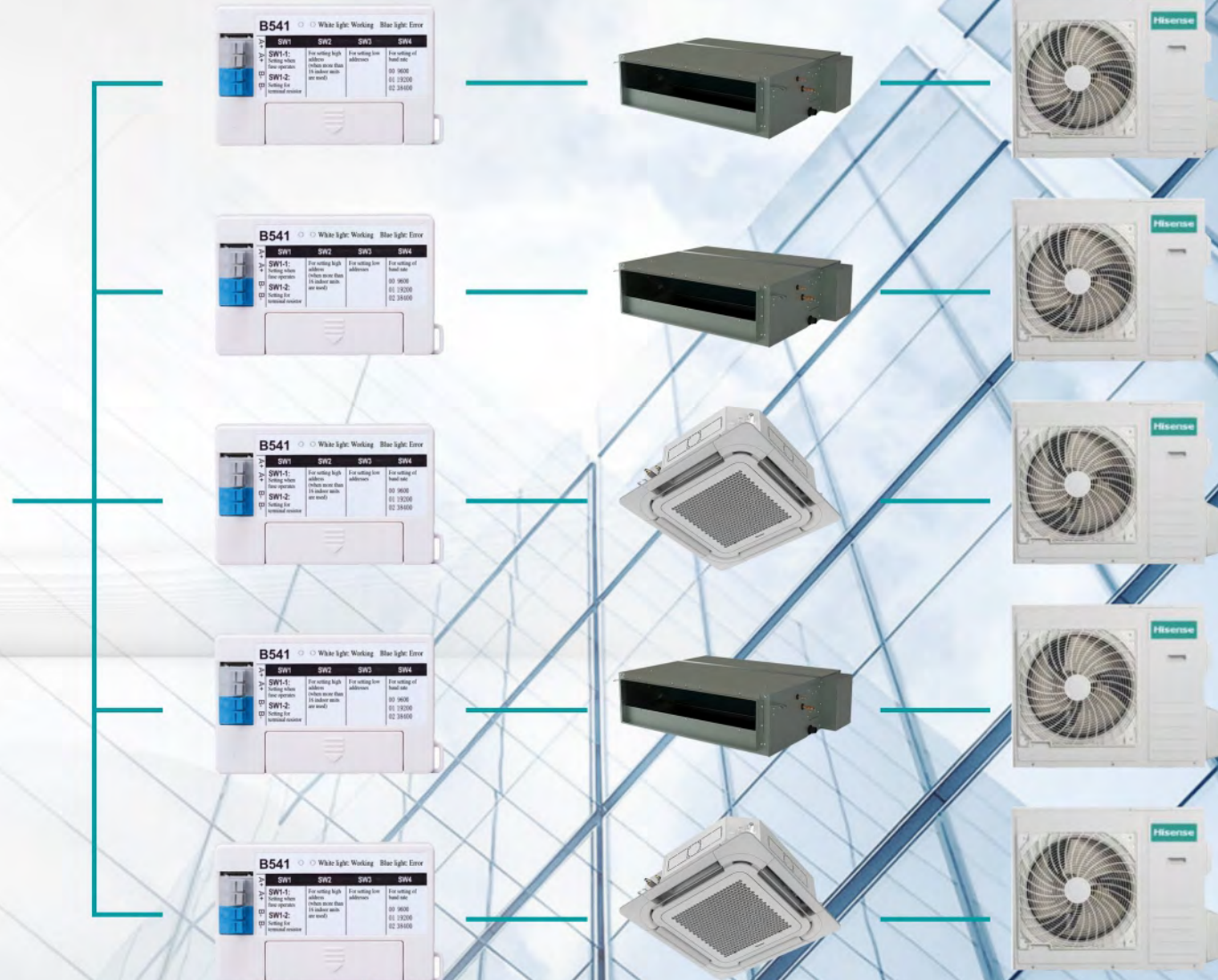
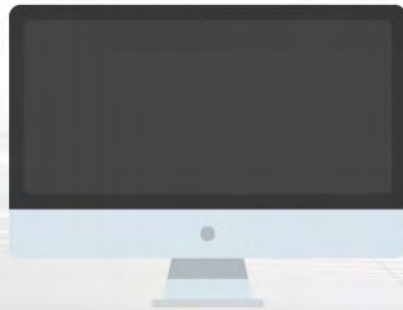
Central Control Structure

1. One central controller can control up to 16 indoor units;
2. The total R485 cable length is up to 1000 meters;



BEMS Controller

Building Energy Management System



WIFI Control

Conveniently control your air conditioner anywhere in your home with just your mobile phone and a WI-FI connection.



HISENSE PRODUCTS YOUR IDEAL CHOICE

